

# Isfield Village Hall

**Submission to**

**Isfield Parish Council**

**24<sup>th</sup> March 2016**

**by**

**Isfield Village Hall (IVH) Management  
Committee**

**[www.isfieldvillagehall.org.uk](http://www.isfieldvillagehall.org.uk)**

# Agenda

- **The Submission**
- **Fit to Section 106 Categories**
- **Benefits to the Community**
- **Why Isfield Village Hall?**
- **The Plans**
- **Next Steps**
- **Examples of Isfield Village Hall Events**

# The Submission

Isfield Village Hall submit formally to Isfield Parish Council a request that **£80K** of the Section 106 Funds from the Millwood Homes Development be used to fund:

- A single story, full height extension on the back of the Village Hall to provide another activity/event room, additional storage and a disabled toilet (estimate for commercial build £160 to £180K)
- Improvements to the kitchen facilities and tidying up of the existing toilets (estimate £20K)

Grants for the additional funds needed will be sought from:

- BIG Lottery Fund **£80K**
- Wealden General Funds **£40K**

# Fit to Section 106 Categories

- **Off-site Youth and Adult Facilities Commuted Sum £43,903.50**

We fit this category as we provide facilities for a wide variety of leisure activities for youths/adults including yoga, art, stained glass, dancing, art classes, over 55s, Women's group, Films etc.

- **Off-site casual/informal children's space commuted sum £63,077.30**

We fit this category as we provide facilities for Pre School every workday during term time & PlayScheme during summer holiday - demand growing e.g. nursery facilities.

- **Off-site Equipped Children's Play Space commuted Sum £60,528.72**

We fit this category as we can provide outside playing facilities children's activities on grass such as parties (bouncy castles etc.) and Scout and Brownie camps etc.

# Benefits to the Community

## Benefits of an Extension:

- Demand for more space in an expanding community: Bonfire Quiz, Dancing Club, Flower Show, Frost Fair, Race Nights, etc. currently tightly packed & demand is growing as is the community
- PreSchool can extend hours to provide nursery facilities (rest & staff room)
- Survey requested all day and morning workshops on weekdays (in tandem with PreSchool - now in hall until 2pm)

## Benefits of Protecting the Solvency of IVH:

- PreSchool is 40% of our income though we have diversified greatly with new activities and own events
- Increased activity in the hall means more income to maintain facilities
- Entirely self funded maintenance (approx. £9K pa) means we need to safeguard our capital

# Why Isfield Village Hall?

**We have strong support from community**

2015 survey requested improvements to facilities (e.g. kitchen), the provision of all day events and support for PreSchool

**Some Open Day petition comments**

'I cannot think of a better thing for the village'

'A village hall is an essential asset for any community to thrive - funds would enable significant improvements to facilities'

'Yes please! The time has come to enhance our great village asset'

'Good use of money that's available'

'The hall is one of the last two village hubs. It needs to be updated and expanded to serve the needs of the growing village'

'Very important to keep the village hall for residents'

'Much loved village hall needs this space'

'Fantastic for the community'

'Bring it up to the standard of other village halls'

'Keep the villages alive and offer the best you can. Let's do it!'

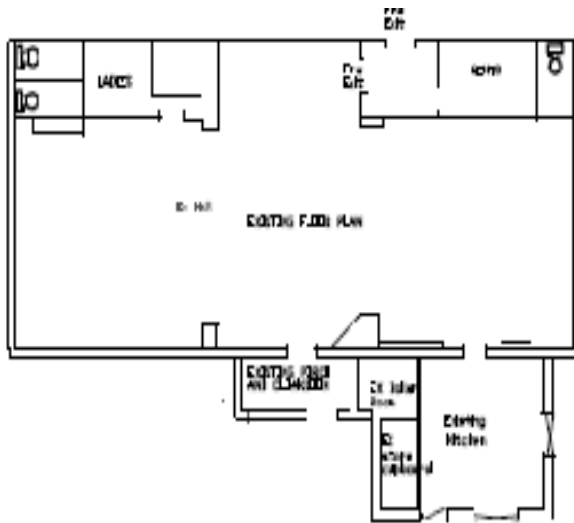
'Will enhance facilities available to the village - greatly needed'

'A very important asset improvement - we fully support'

# Why Isfield Village Hall?

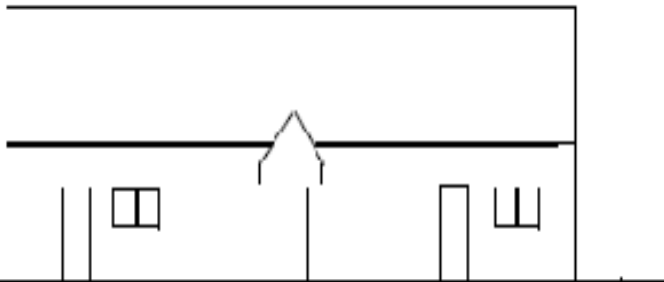
- We are an independent registered charity for the benefit of the whole village
- The majority of village events are held at the village hall; we subsidise the hire rates for PreSchool, we proactively provide activities for the community (Yoga, Art etc), we organise and fund our own events
- We have held a Pre Application Advisory Meeting with Wealden Planning with positive feedback on our plans
- We are solvent & financially prudent
- We have an energetic & forward thinking Management Committee capable of ensuring that the improvements benefit the village community

# The Plans



For illustrative purposes only

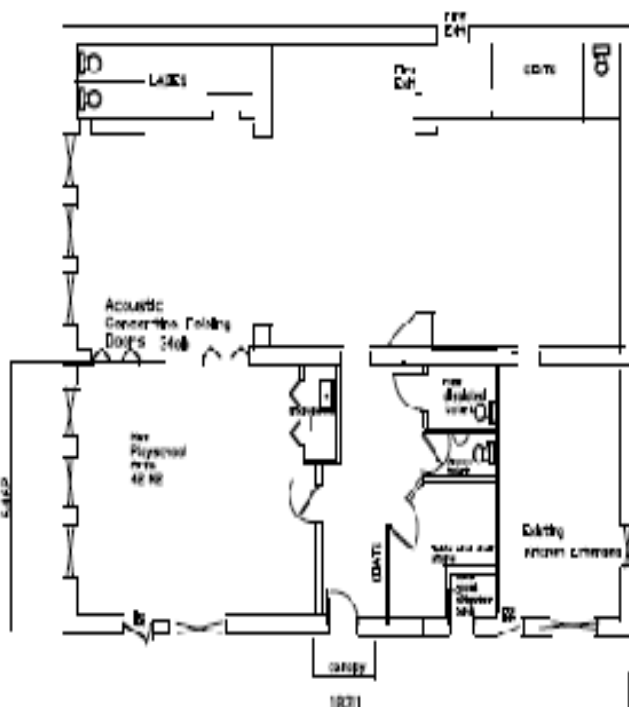
EXISTING VILLAGE HALL



PROPOSED REAR ELEVATION



15



16



# Next Steps

- Response by IVH Management to further questions & requests for information on the submission by Isfield Parish Council
- **Early commitment of support from Isfield Parish Council for benefit of the village**
- Preparation of funding documentation as required by Wealden
- Detailed Design and Planning Application.

# Isfield Village Hall Sussex Express 2015

## LOCAL NEWS

### COMMUNITY

# Is Isfield the busiest village?

PHOTOGRAPH BY SUSAN KING

Scheduled for the summer holidays is a two-week play-scheme enabling busy parents to find somewhere for children to take part in fun activities during the long August break.

Other courses in the pipeline - that were specifically requested by residents - will include floral decoration workshops, painting courses and life drawing sessions.

Digital skills will come to the fore with a course on painting with your iPad and for the traditionalists, there is basket making. Race night events are popular social evenings.

Katherine added: "I want to thank our wonderful village organisations for all the support they have shown. We certainly have a lively and interesting community."

For information or to book the hall ring: 01825 744050 or email: info@isfieldvillagehall.org.uk



Uckfield Mayor Cllr Ian Smith launches the village hall open day

BY SUSAN KING  
susan.king@isfieldvillagehall.com  
01825 744050

The tiny village of Isfield more than makes up for its size with a social calendar to beat many a big town.

This was highlighted last Saturday, (March 31) when Uckfield mayor, Cllr Ian Smith launched Isfield Village Hall's open day, welcomed guests and toured all the stands.

Organiser Katherine Meakin said: "The day was extremely well attended and we were delighted to see it was fully supported by the Isfield and Little Horsted Primary School and PTEA as well as many of the village groups that use it."

"These include the Pre-School, Play Scheme, Isfield Community Enterprise, the local Bonfire Society, Wom-

en's Group (TWIG), Forget Me Not's club, (a group for the over 55s), Isfield Dancing Club and Uckfield Yoga."

During the event, new activities were also introduced. These will include monthly film shows, Katherine Meakin

explained that a community questionnaire asked people in the village what they would like to see take place at the hall and film shows came almost at the top of the list, mirroring the popular Film on Friday sessions in Mayfield.

- \* Free Entry
- \* Demonstrations
- \* Raffle & Competition Prizes
- \* Refreshments

# Isfield Village Hall Open Day

**SATURDAY 21st MARCH 2016**  
**11am - 4pm**



**Drop in to Isfield Village Hall with your family & friends for a fun day when the existing and new organisations and events using the hall are presenting their activities and showing you how to join in and take up a new interest or learn a new skill.**

**Entry is free, refreshments will be available all day, we will be running a raffle and competitions with exciting prizes.**

#### **Existing Organisations & Events Exhibiting:**

Isfield Community Enterprises (ICE)  
Isfield Dancing Club  
Isfield & Little Horsted Bonfire Society  
Isfield & Little Horsted C of E Primary School  
Isfield Parish Council  
Isfield Play Scheme  
Isfield Pre School  
Forget Me Nots Club  
The Women's Isfield Group (TWIG)  
Uckfield Yoga

#### **New Organisations & Events Exhibiting:**

Basic Pottery classes  
Basket Making classes  
Beginners' Contemporary Stained Glass course  
Film Show Events (monthly)  
Flowers & Daughters: Floral workshops  
Language of the Stars workshops (Astrology)  
Life Drawing sessions  
Painting course (watercolour, acrylics)  
Painting with your iPad workshops  
Race Night events  
Scalextric Race Day events  
Stonework/stone carving classes  
Wine Tasting events

**Isfield Village Hall, Station Road, ISFIELD, Nr Uckfield, TN22 5XG**

***For more information on how to exhibit or attend please contact  
info@isfieldvillagehall.org.uk or call 07515 898912***

*Isfield Village Hall is an independent charity, entirely dependent on income from bookings of the hall and donations to meet maintenance and running costs. We are not funded by the Isfield Parish Council, or any other organisation, and our Committee members are all volunteers.*



# Isfield Art Group



## Why not join Isfield Art Group?

*Thursday 2pm to 4pm at Isfield Village Hall*

This painting and drawing class is open to all levels from pure beginners to more experienced painters. We cover a wide range of topics from painting styles and techniques using watercolor, acrylics and pastels. Classes offer personal tuition for everyone from a professional art tutor.

**SPECIAL OFFER - 5 LESSONS FOR £50 OR RECOMMEND A FRIEND FOR 10% DISCOUNT**

For more details contact Steve Pierce-Smith on [steve@remingtons.co.uk](mailto:steve@remingtons.co.uk) or call 01892 723596.

[www.isfieldvillagehall.org.uk](http://www.isfieldvillagehall.org.uk)  
Station Road, Isfield, TN22 5XG



# Isfield Village Hall – Film Shows

Isfield Village Hall & Filmspot present:

# Singin' In The Rain

with complimentary glass of wine and nibbles!

FILM

Saturday  
23 May 2015

Doors open 7pm

Film starts 7.30pm

Tickets £6 on the door

SPOT

at Isfield Village Hall, Station Road, Isfield, TN22 5XG

For enquiries email:  
[info@isfieldvillagehall.org.uk](mailto:info@isfieldvillagehall.org.uk)

[www.filmspot.org.uk](http://www.filmspot.org.uk) | [www.isfieldvillagehall.org.uk](http://www.isfieldvillagehall.org.uk)



# Isfield Village Hall Race Night – 9<sup>th</sup> Jan 2016



Isfield Village Hall and Isfield and Little Horsted Bonfire Society (I.L.H.B.S.) are hosting a first class Race Night; doors open 7.30pm, first race 8pm. The price per person of £12.50 includes 8 races, a £1 bet on the first race, ploughman's supper and a glass of wine. Bring your own drinks. We have an experienced MC/compere, computerised tote system, race cards, advance sale of each of the horses in the first 7 races and an auction of the horses in the last race, selection of flat and hurdle races, all races shown on DVD. Book for this event by emailing [info@isfieldvillagehall.org.uk](mailto:info@isfieldvillagehall.org.uk) or buy your tickets from the Laughing Fish pub, Isfield.

[www.isfieldvillagehall.org.uk](http://www.isfieldvillagehall.org.uk)

Station Road, Isfield, TN22 5XG



# Isfield Village Hall

## Frost Fair 29<sup>th</sup> November 2015



**Exciting stalls - Raffle - Prizes**  
**Teas/Homemade cakes**  
**Entry FREE (11am to 4pm)**

**Come and enjoy the Isfield Frost Fair where local artists, craftspeople and suppliers will be offering wonderful Christmas gifts (toys, ceramics, artworks, prints, stained glass, jewellery, toiletries, plants, bird feeders & nest boxes, gardening gifts, yoga gifts, soaps, sweets, etc.) and fabulous Christmas fare (wreaths, trees, cheeses, specialist charcuterie, chutneys & jams, mustards, Christmas cakes & puddings, rustic mushrooms, gift packs, etc.).**

**[www.isfieldvillagehall.org.uk](http://www.isfieldvillagehall.org.uk)**  
**Station Road, Isfield, TN22 5XG**